



Kings Tower, Chelsea Creek
Fulham SW6

GARTON JONES.COM



Kings Tower, Chelsea Creek Fulham, SW6

GARTON JONES.COM

11 Park Street
Chelsea Creek
London
SW6 2FS

Sales +44 (0) 20 7824 7090
paul@gartonjones.com
www.gartonjones.com

£750 Per Week

26th Floor With Stunning Views - Furnished one bedroom apartment located in this final landmark building here at Chelsea Creek The Kings Tower which offers high quality accommodation with enviable high-class facilities. The offers 626sqft/58.1sqm of elegant accommodation comprising of a spacious lounge and balcony, double bedroom with built in wardrobe, bathroom and ample storage space. The Kings tower residence will have access to the Halcyon Club which will offer a 31st floor sky lounge and terrace with enviable views towards the city, two residents cinema's, business lounge & private meeting rooms, 24-hour concierge and a fitness centre offering an indoor pool, sauna & steam room as well as a gymnasium. Chelsea Creek is a unique dockside development within easy reach of Imperial wharf overground station (0.1mile) as well as Fulham Broadway Tube line, District Line (0.6mile) and the stylish King's Road and Chelsea Harbour, with its many restaurants, bars and boutiques.

** Please note furniture may differ to that shown in the current photos **

London Borough Of Hammersmith & Fulham — Band TBC
Deposit 5 Weeks
Tenancy 12 Months

EPC - B (86)

- 26th Floor One Bedroom Apartment
- 626sqft (458.1sqm)
- Furnished
- High Specification
- Open Plan Modern Kitchen
- Balcony
- 24 Hour Concierge
- Residents Spa — Swimming Pool & Gymnasium
- Two Cinemas, Sky Lounge & Roof Top Terrace
- EPC - B (86)



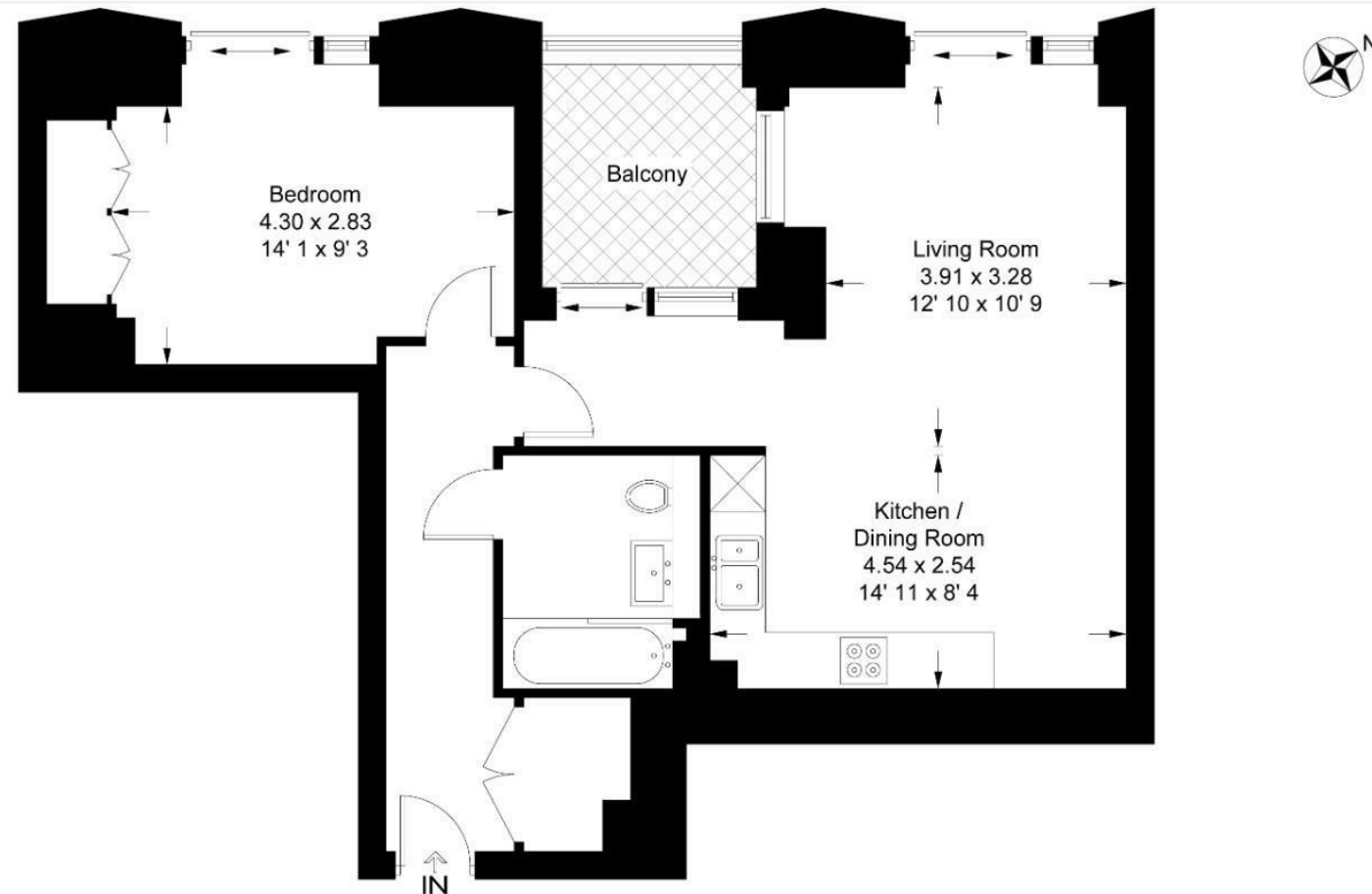
EPC certificate available on request.

Kings Tower

Approximate Gross Internal Area = 626 sq ft / 58.1 sq m

Balcony = 65 sq ft / 6 sq m

GARTON JONES
LONDON



This plan is not to scale and must be used as layout guidance only. All measurements and areas are approximate and should not be relied upon to provide accurate information. This plan must not be relied upon when making property valuations, design considerations or any other such relevant decisions. We accept no responsibility or liability (whether in contract, tort or otherwise) in relation to any loss whatsoever arising from or in connection with any use of this plan or the adequacy, accuracy or completeness of it or any information within it.



